

EverLeaf Tiger

Spring Forage Oat

Key Attributes:

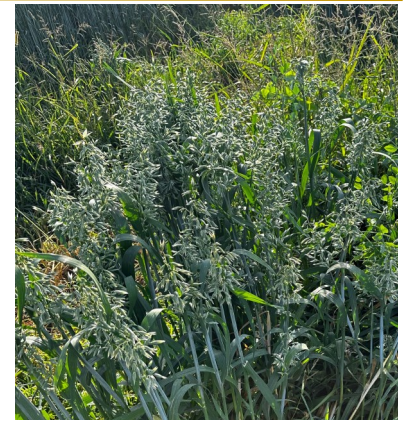
- ◆ Delayed Heading
- ◆ Improved Leaf Density
- ◆ Dark Green Foliage
- ◆ Quality with Tonnage
- ◆ Harvest Flexibility
- ◆ Compact Panicle (seed head)



Yield: Replicated Forage Plot Trials

Measured by protein produced per acre on a four year average

	Maturity	Percent	Height	Protein
	Days	Protein	Inches	Tons/Acre
EverLeaf Tiger	85	11.98	38	.74
EverLeaf 126	90	11.70	45	.86



Maturity:

- Five days earlier than 126

Plant height:

- 11% shorter on average than 126

Lodging Resistance:

- 4 Year average from replicated trials

(Where 1 is upright and 9 is flat)

EverLeaf Tiger 3

EverLeaf 126 3

Seed Type:

- Traditional EverLeaf coloration

EverLeaf Tiger, while close in statistics to EverLeaf 126, has a few key factors that can make it a more desirable candidate. Compared to 126, Tiger provides a shorter maturity timing and excellent lodging resistance due to the height reduction. Tiger keeps the recognizable 126 green color as well as the large leaves that the EverLeaf class of oats is recognized for.

Tiger oats produce close to the same amount of dry yield and protein per acre. Tiger keeps the same dense canopy and therefore a better leaf to stem ratio in which the quality is maintained. Tiger thrives in a fertile and moist soil, but dry land production is possible with proper inputs and adequate rainfall.