

# ICICLE

## Winter Wildlife Pea



### Plant Statistics

#### Key Attributes:

- White flowered for better palatability and digestibility
- Very strong stooling capability
- As good or better winter durability as any other winter pea

#### Yield:

- Exceptional forage growth

#### Growth Habit:

- Normal leaf pea

#### Maturity:

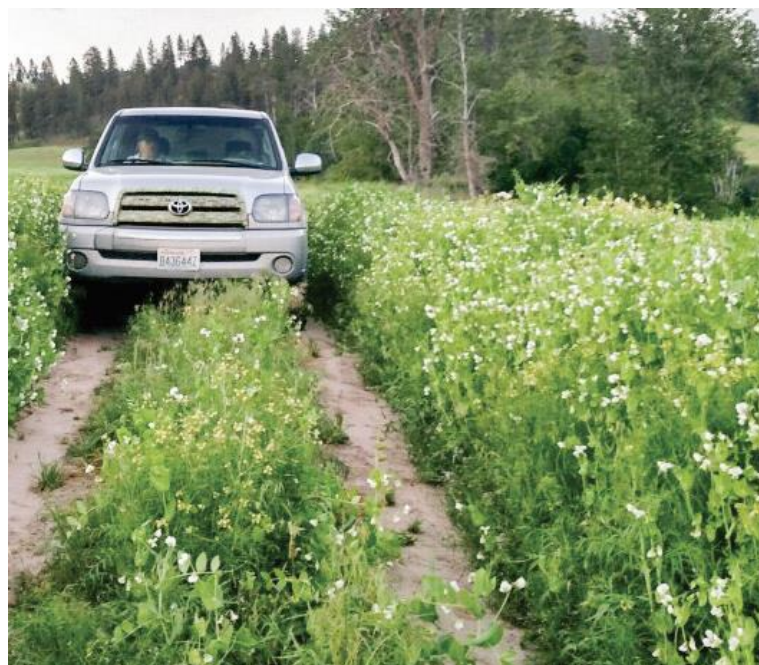
- Late flowering to match up with cereals better

#### Plant Height:

- 5.5 feet

#### Seed Type:

- 4,210 seed per pound
- More seeds per pound purchased



We at ProGene Plant Research were excited to find such a unique and versatile winter pea like Icicle in our breeding program. The unique mix of characteristics in Icicle makes it particularly attractive for all three of the important markets for a high biomass yielding winter pea.

Uniquely adapted to use in Wildlife plantings and blends.

- A white flowered pea like Icicle is free from anthocyanin which makes Austrian Winter Pea flowers purple. As a result, the forage from Icicle is more digestible and sweeter tasting to deer.
- Equal or better winter hardiness than other winter peas currently available
- Small seed size with seedling strength
- Even better when in a blend with a spring pea

Variety	Seed Size Seed / lb	Flower Color
<i>Icicle</i>	4,210	White
<i>Nutrigreen</i>	2,679	White
<i>Austrian Winter Pea (AWP)</i>	3,907	Purple

Bred & Developed By:



PVP #201600388  
All Rights Reserved

860 S. Crestline, Othello WA 99344  
Phone: 509-488-3977  
Email: [kurt@progenellc.com](mailto:kurt@progenellc.com)  
[www.progenellc.com](http://www.progenellc.com)